

VALVE BODIES | DIRECT ACTING (30 BAR) - NORMALLY CLOSED

High pressure (30 bar) solenoid valves, suitable for water, air, oil.



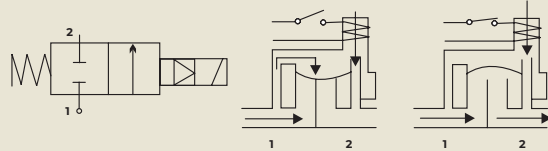
30
BAR

OPERATION AND INSTALLATION

- > Energised coil opens the plug
- > Female end connections, size 1/4" BSP

ELECTRICAL SPECIFICATIONS

- > Closing time: 10 msec.
- > Internal parts in stainless steel (17% CR)
- > Fluid temperature: -10 to +140°C



MAGNETS

Actuator Coils are supplied separately. For voltage selection and technical data see Coils for bodies on [our website](#).

TECHNICAL SPECIFICATIONS

TYPE	Female Connection	Working Temperature	Valve Resting State	Working Pressure
20B30	1/4" BSP	140 °C	NC	0-30 bar

VALVE BODIES | DIRECT ACTING (3/2 WAY) - NORMALLY CLOSED

Used in applications which require actuation and automatic discharge in the Sterilisers, Air compressors, Espresso coffee machines, Pilot valves, Diesel oil burners, Polyurethane plants and Water treatment plants.



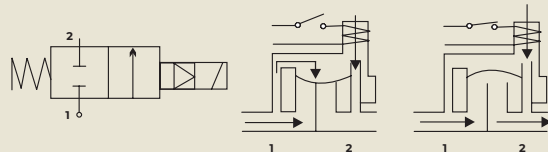
3/2
WAY

OPERATION AND INSTALLATION

- > Energised coil opens the plug
- > Female end connections, size 1/4" BSP

ELECTRICAL SPECIFICATIONS

- > Closing time: 10 msec.
- > Internal parts in stainless steel (17% CR)
- > Fluid temperature: -10 to +140°C



MAGNETS

Actuator Coils are supplied separately. For voltage selection and technical data see Coils for bodies on [our website](#).

TECHNICAL SPECIFICATIONS

TYPE	Female Connection	Working Temperature	Valve Resting State	Working Pressure
20B141	1/4" BSP	140 °C	NC	0-7 bar

All dimensions and weights are inclusive of coil.



Need Some Help? GET IN CONTACT:

+44 (0)161 946 0088
banicocontrols.com
info@banico.co.uk

Terms and Conditions apply. Please visit the website for our full trading Terms and Conditions. Products are shown for illustration purposes only. Offers are subject to availability. E&OE.