

# VALVE BODIES | SERVO-ASSISTED DIAPHRAM - NORMALLY OPEN

Solenoid Valves | SERVO-ASSISTED DIAPHRAM

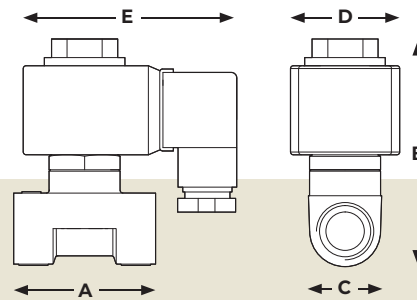
Solenoid valves for large flow capacity, suitable for water, air, oil, inert gases and other fluids non-corrosive for copper alloys, with viscosity up to 2°C Engler.



**NORMALLY OPEN**

## OPERATION AND INSTALLATION

- > Normally open, two-way valve
- > Servo-assisted membrane actuator
- > Female end connections, size G 3/8" to 2"
- > Media enters the space above and under the membrane
- > When the coil is energized, the pilot plug closes and the upstream media enters the space above the membrane, pressing it against the seat, preventing the flow.
- > N.B. minimum differential pressure : 0.1 bar is necessary for valve to open and close correctly.
- > Valve should be mounted in an upright position to operate correctly.

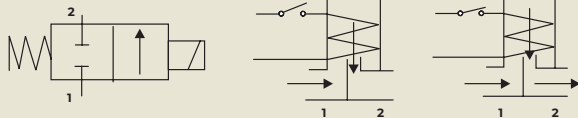


29C	A = 69	B = 92.5	C = 40	D = 40	E = 78
29D	A = 72	B = 94.5	C = 40	D = 40	E = 78
29E	A = 100	B = 100	C = 65	D = 40	E = 78
29F	A = 104	B = 105.5	C = 65	D = 40	E = 78
29G	A = 145	B = 127	C = 102	D = 40	E = 78
29H	A = 145	B = 127	C = 102	D = 40	E = 78
29I	A = 173	B = 141	C = 118	D = 40	E = 78

All figures are in mm

## ELECTRICAL SPECIFICATIONS

- > Closing time: 10 msec.
- > Press-forged brass body
- > Internal parts in stainless steel (17% CR)
- > Gaskets in NBR (buna N)



### MAGNETS

Actuator Coils are supplied separately. For voltage selection and technical data see Coils for bodies on [our website](#).

## TECHNICAL SPECIFICATIONS

TYPE	Through Bore Diameter	Female Connection	Kv	Shutdown time with 1 bar	Minimum Differential Pressure	Maximum Differential Pressure	Test pressure (DIN2401)	Working Temperature	Unit Weight
	mm	BSP	m <sup>3</sup> /h	DP bar	bar	bar	PN bar	°C	Kg
29C	13	3/8"	3.0	1	0.1	20	25	-10 to 90	0.56
29D	13	1/2"	3.0	1	0.1	20	25	-10 to 90	0.59
29E	20	3/4"	8.4	1.5	0.1	20	25	-10 to 90	1.05
29F	25	1"	9.6	1.5	0.1	20	25	-10 to 90	1.11
29G	35	1 1/4"	25.2	2.5	0.1	20	16	-10 to 90	3.15
29H	40	1 1/2"	30.0	3	0.1	20	16	-10 to 90	2.87
29I	50	2"	37.2	3.5	0.1	20	16	-10 to 90	4.26

Kv = water flow in m/h with pressure drop of 1 bar (1 bar = 100kPa).

All dimensions and weights are inclusive of coil.

Need Some Help? GET IN CONTACT:

**+44 (0)161 946 0088**  
[banicocontrols.com](http://banicocontrols.com)  
[info@banico.co.uk](mailto:info@banico.co.uk)



Terms and Conditions apply. Please visit the website for our full trading Terms and Conditions. Products are shown for illustration purposes only. Offers are subject to availability. E&OE.