

interlock system / xenon beacon

STAND ALONE GAS MINDER (INTERLOCK SYSTEM PACK)

Mandatory requirement for commercial kitchens

GM-2	Control unit complies with all current Corgi gas regulations for commercial kitchens. IP56 rated control box ensures there is no gas flow to burners unless air extraction is present.
ISP-2	System pack comprises of: GM-2 control unit + DPSA-20 pressure switch + DK-1 duct kit + EM-1 remote emergency stop button

Note: This unit to be used with 230 Vac ZEV gas solenoid valve



XENON BEACON

White polycarbonate body

BCR-1	Red	230 Vac	3W 1 sec pulses
BCY-1	Amber	230 Vac	3W 1 sec pulses



emergency stop button / thermal links

EMERGENCY STOP BUTTON

10 (6) at 230 Vac Volt free contact.

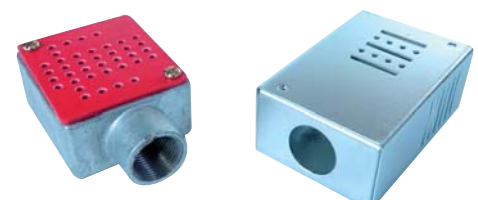
EM-1	Push to break circuit - Turn to reset
EM-1K	Push to break circuit - Use key to reset



THERMAL LINK

Rating 24 Vac/dc 110 Vac, 230 Vac 10A

TL-1	Fuse melting Temp <72°	IP20 20mm Conduit entry in one end
TL-2	Fuse melting Temp <72°	IP20
F-1	Spare Fuse	



The unit should be mounted so that the perforated cover faces downwards and the ventilation holes in the back/side of the box must not be obstructed.