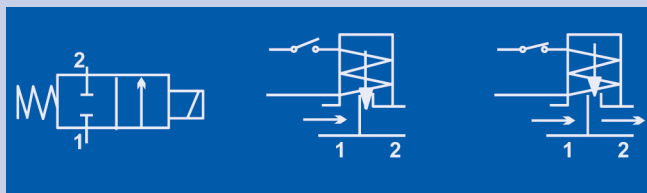


NORMALLY CLOSED VALVE BODIES DIRECT OPERATION

Solenoid valves suitable for Air Conditioning and Refrigeration

INSTALLATION AND OPERATION

- > Normally-closed 2 way valve
- > Direct acting
- > Energized coil opens the valve.



SPECIFICATIONS

- > Closing time : 10 msec.
- > Press-forged brass body
- > Internal parts in stainless steel (17 % CR)
- > Seal: Ruby
- > Fluid temperature : -40 to +180 C°

COILS

- > Actuator coils are supplied separately, see Coils page for voltage selection and technical data

DIMENSIONS

| TYPE | Face to face mm | Width mm | Height mm |
|------|-----------------|----------|-----------|
| 21B | 56 | 27 | 78 |
| 21C | 60 | 27 | 78 |
| 22B | 115 | 27 | 78 |
| 22C | 115 | 27 | 78 |

| TYPE | Size | Connection | Orifice mm | KV l/min | Voltage | Pressure bar Min | Pressure bar MOPD |
|------|----------|------------|------------|----------|---------|------------------|-------------------|
| 21B | 1/4" SAE | Flare | 2.5 | 3.5 | 230Vac | 0 | 30 |
| 21C | 3/8" SAE | Flare | 2.5 | 3.5 | 230Vac | 0 | 30 |
| 22B | 1/4" ODF | Solder | 2.5 | 3.5 | 230Vac | 0 | 30 |
| 22C | 3/8" ODF | Solder | 2.5 | 3.5 | 230Vac | 0 | 30 |

*Kv = water flow in m lh with pressure drop of 1 bar (1 bar = 100kPa)
For dual-frequency coils when used at 60 Hz given values must be reduced by approx. 12%*