

solenoid valves

07

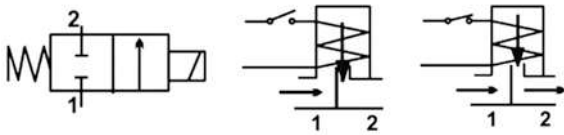
30BAR, DIRECT ACTING, NORMALLY CLOSED

Two way High Pressure 30bar for water, air and oil

20B30 1/4" 140°C NC 0 to 30 bar

Energised coil opens the plug

Female end connection, size 1/4" BSP



ELECTRICAL SPECIFICATIONS

Closing time : 10 msec.

Internal parts in stainless steel (17 % CR)

Fluid temperature: -10 to +140°C

MAGNETS

Actuator coils are supplied separately, see Coils page for voltage selection and technical data



30 bar

3/2 WAY, DIRECT ACTING, NORMALLY CLOSED

Used in applications which require actuation and automatic discharge in the Sterilisers, Air compressors, Espresso coffee machines, Pilot valves, Diesel oil burners, Polyurathane plants and Water treatment plants.

20B141 1/4" 140°C NC 0 to 7 bar

Energised coil opens the plug

Female end connection, size 1/4" BSP

ELECTRICAL SPECIFICATIONS

Closing time : 10 msec.

Internal parts in stainless steel (17 % CR)

Fluid temperature: -10 to +140°C

MAGNETS

Actuator coils are supplied separately, see Coils page for voltage selection and technical data



3/2 way